

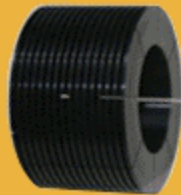
Optional accessories

for macro and micro light sources

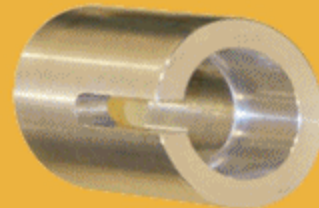
1. Heat Sink



HS-01



HS-02



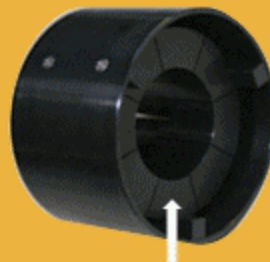
HS-03

Technical data for FMA-04 Fluorescent Attachment light source and LED driver:

2. Heat Sink Cover



HSC-01



HS-02

Powered from electricity network:

84VAC + 260VAC

Powered by power supply:

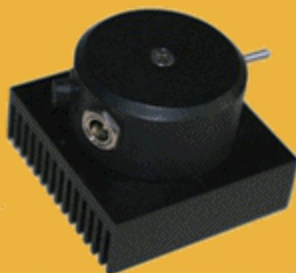
6VDC, 1.5A

Coaxial connector (central pin is positive)

Current consumption depends on the light intensity switch position of the light source selector

		LED current
1. pos.:	0,33A	0,44A
2. pos.:	0,49A	0,60A
3. pos.:	0,63A	0,72A

3. LED Drivers



FMA-04/LD-01/01

One channel driver



FMA-04/LD-03/01

Three channel driver



BIOLOGICAL LABORATORY EQUIPMENT
MAINTENANCE AND SERVICE LTD.

Zsélyi Aladár u.31, H-1165 Budapest, HUNGARY

Tel: +36-1-407-2602 Fax: +36-1-401-0925 E-mail: bls@t-online.hu Website: www.bls-ltd.com